



# Arge

## Makina

ve Konst. Tic. Ltd. ti.



Arge mekanik merkezi...

## irket Profili

1990 yılında 40 m<sup>2</sup> alanda kurulan firmamız, kuruldu u tarihten itibaren tala lı imalat ve çelik konstrüksiyon imalatı yaparak bir çok firmanın tedarikçisi konumunda hizmet sunmu olup, 1994 yılından itibaren yedek parça üretiminde kazandı ımız tecrübe ve bilgi birikimini kullanarak 2004 yılında 650 m<sup>2</sup> lik alanda makine imalatına ba ladık. Bu kapsamda projesi olanın, proje üzerinde numunesi olanın, numune üzerinde projelendirerek makine imalatı ve makine yedek parça imalatı yapılmaktadır. irketimiz özellikle seramik sektöründe ihtiyaçlara cevap veren makinaların ve makine yedek parçalarının imalatına yönelmi tir.

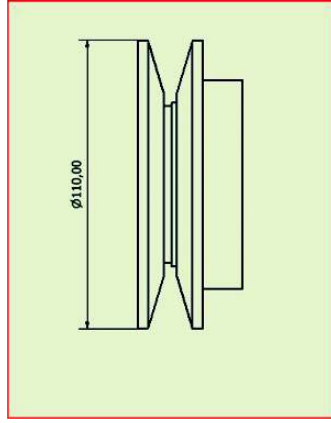
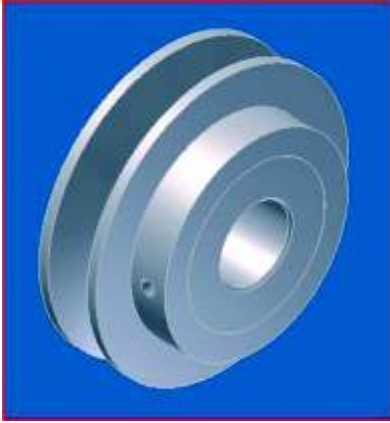
Daha sonra talep üzerine projesi firmamıza ait olan makinaların imalatına devam ederek bir çok makine imalatını gerçekle tirmi tir. malatı firmamıza ait olan bu makinalar u an seramik sektöründe güvenle kullanılmaktadır.

## Company Profile

*Our Company established at 1990 with a small workshop has been involved with machining and steel construction and provide service to big constructors. Experienced gained with the spare part production since 1994 we started to produce machinery at 2004 in our 650 aqm plant. Currently we are mainly involved with production of machinery, spare parts and machineries & equipments in accordance with the projects, models and or samples provided by the customers. We are mainly experienced with the machinery & equipment and the spare parts used in ceramic industry.*

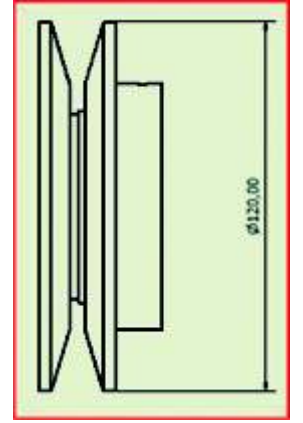
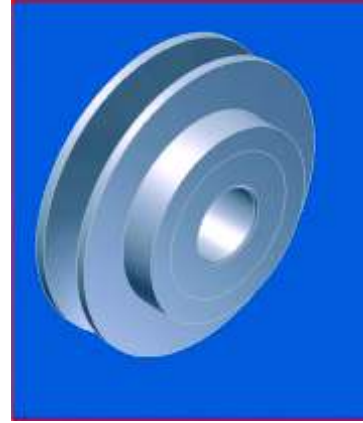
*Meanwhile we also made production prototype machineries which are projected by us and which has been used by ceramic industry with deep confidence against our brand and quality.*

KARO



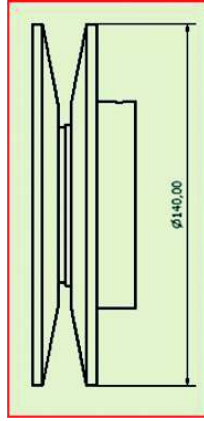
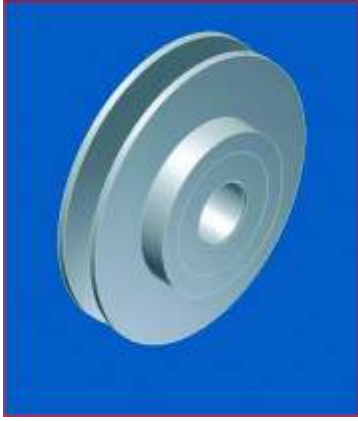
KOD 02001014

110 ayarlı kasnak  
Adjustable pulley



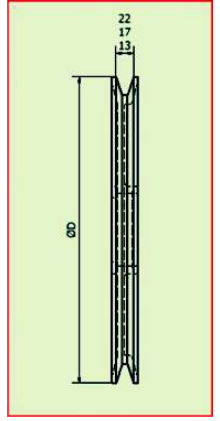
KOD 02001015

120 ayarlı kasnak  
Adjusted pulley



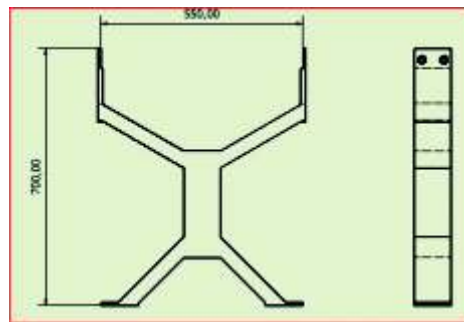
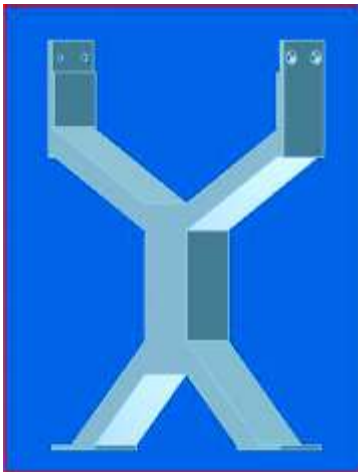
KOD 02001016

140 ayarlı kasnak  
Adjustable pulley



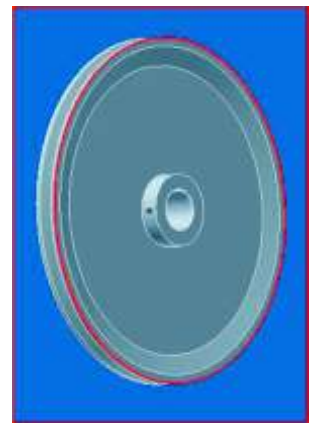
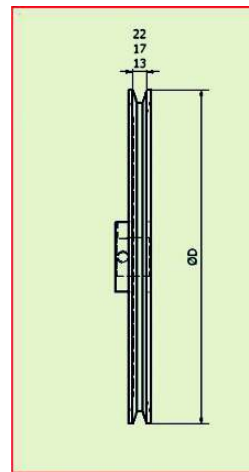
KOD 02001014

Avare kasnak  
dle pulley



KOD 02001004

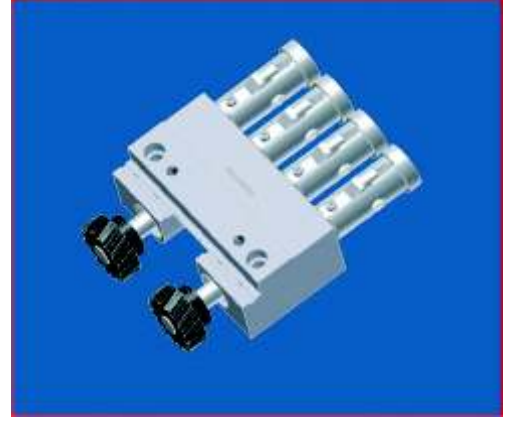
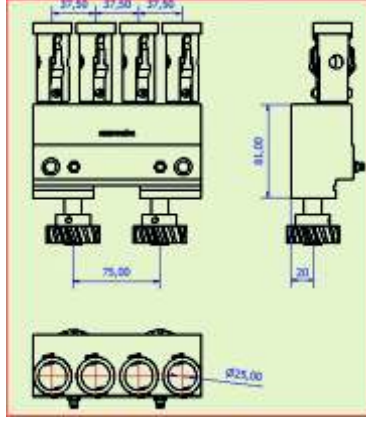
Bant aya ı / Band support



KOD 02001013

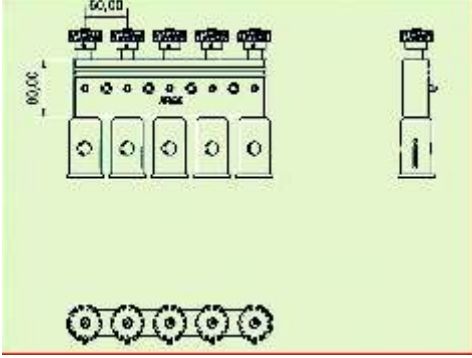
Sabit kasnak  
Fixed pulley

KARO



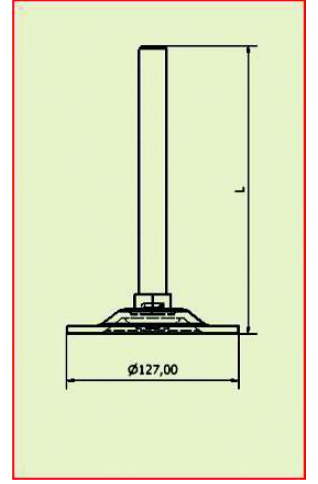
KOD 02001001

Küçük tahrik kutusu / *Small actuating box*



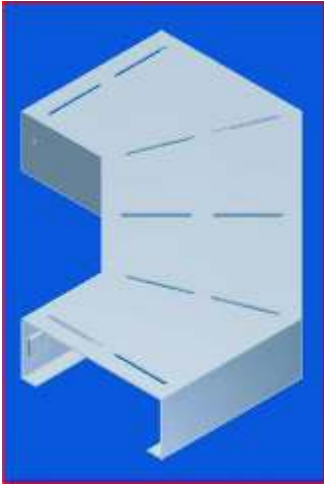
KOD 02001002

Büyük tahrik kutusu / *Big actuating box*



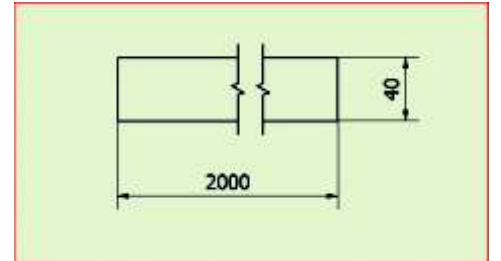
KOD 02001009

Papuç / *Foot plate*



KOD 02001003

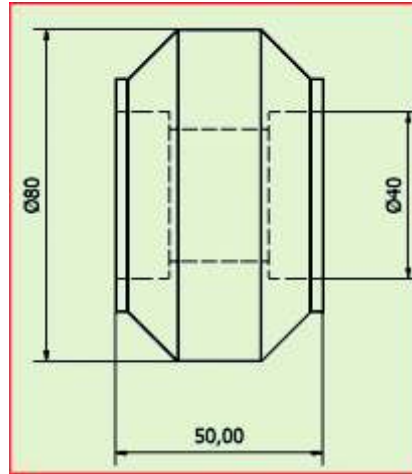
Bant köşe döndürme parçası  
*Belt corner rotation particle part*



KOD 02001010

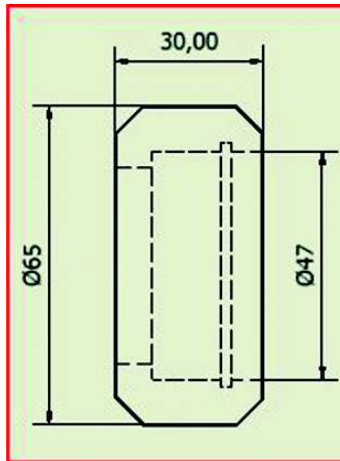
Bant yan klavuz  
*Band side guide*

KARO



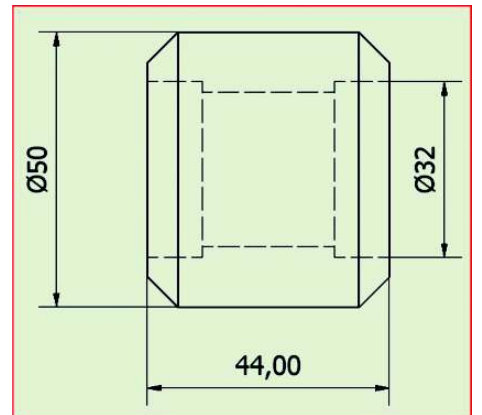
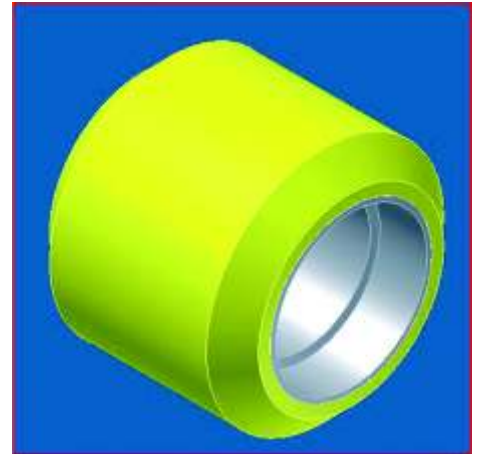
KOD 02001017

Mekanizma tekeri / Mechanism wheel



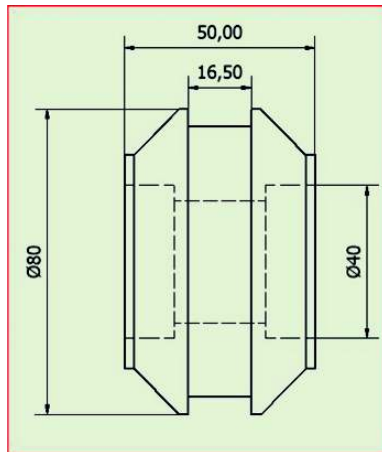
KOD 02001018

Mekanizma tekeri / Mechanism wheel



KOD 02001020

Mekanizma tekeri / Mechanism wheel



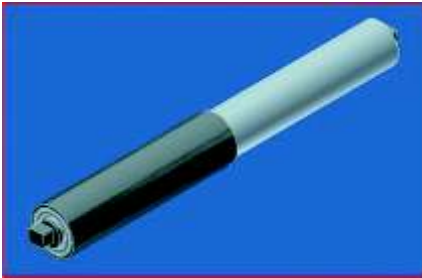
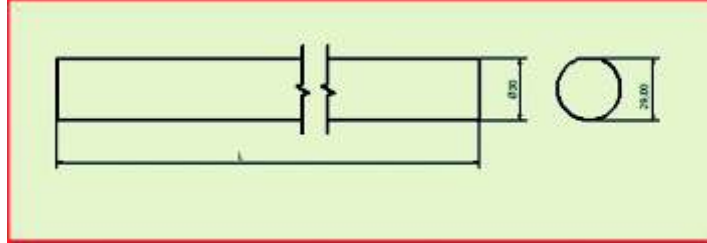
KOD 02001019

Mekanizma tekeri / Mechanism wheel



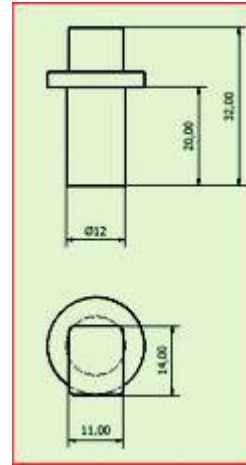
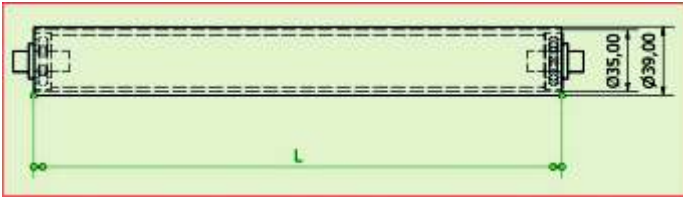
KOD 02001005

Q30 tahriksiz mil  
Not actuated shaft



KOD 02001006

Q30 tahrikli mil / Actuated shaft

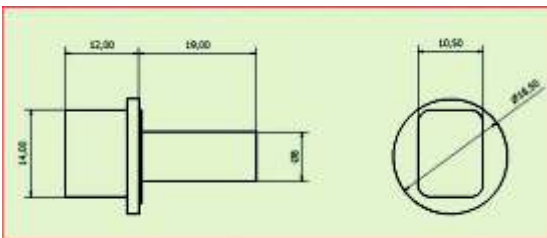
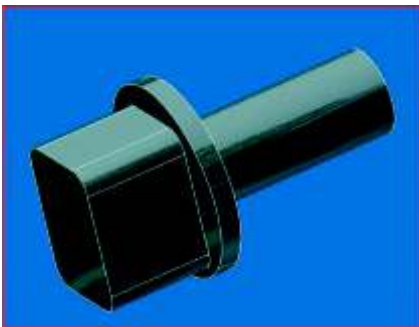


KOD 02001007

Rulo / Roller

KOD 02001012

Rulo pimi  
Roller pin



KOD 02001008

Rulo / Roller

KOD 02001011

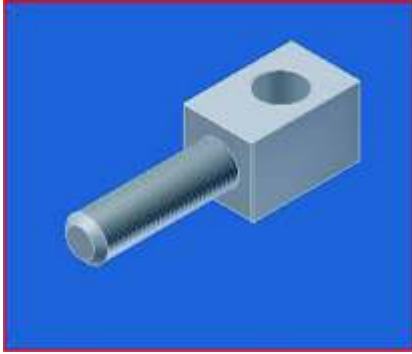
Rulo pimi / Roller pin



KOD 02001009

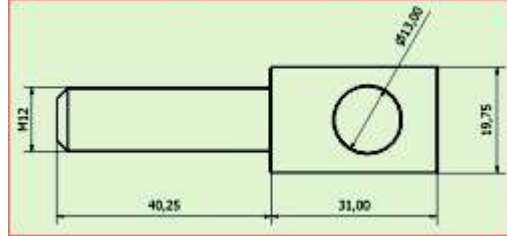
Rulo / Roller

V T R F Y E



KOD 01001004

Basınçlı kalıp  
gerdirme pimi

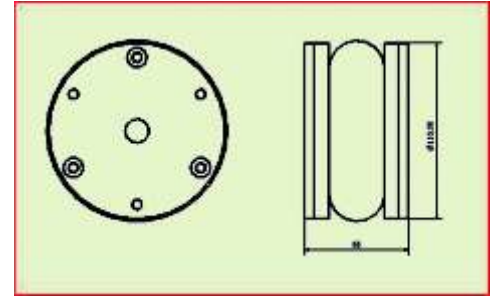
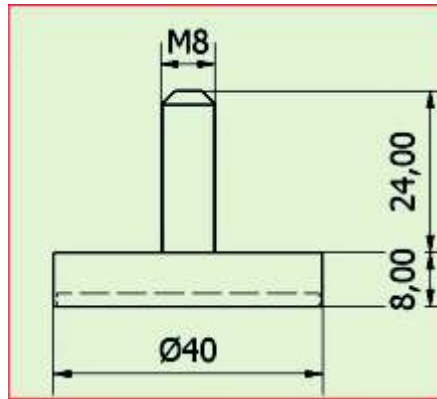


Pressurized mold stretched pin



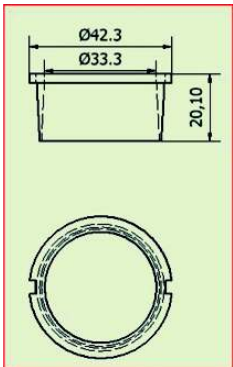
KOD 01001005

Basınçlı kalıp maça yuvası  
Pressurized mold core socket



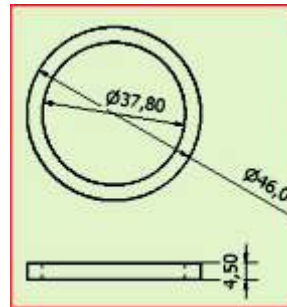
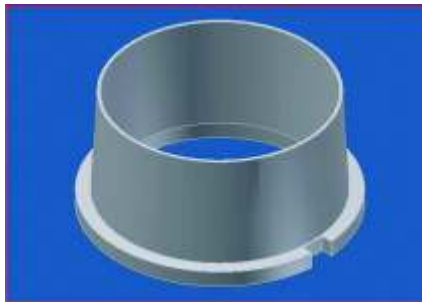
KOD 01001001

Basınçlı kalıp  
hava yastığı  
Pressurized mold air buffer



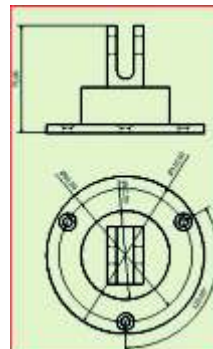
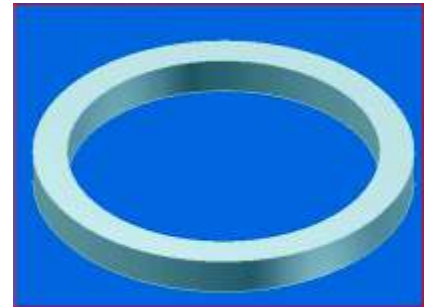
KOD 01001006

Basınçlı kalıp sifon delik  
aparatu  
Pressurized mold siphon  
hole apparatus



KOD 01001006

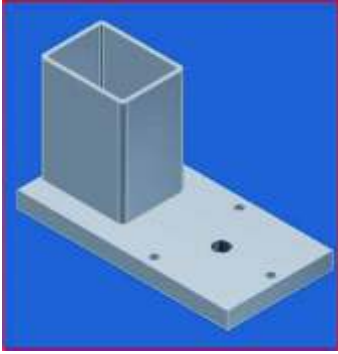
Basınçlı kalıp sifon delik  
aparatu burcu  
Pressurized mold siphon hole apparatus bush



KOD 01001002

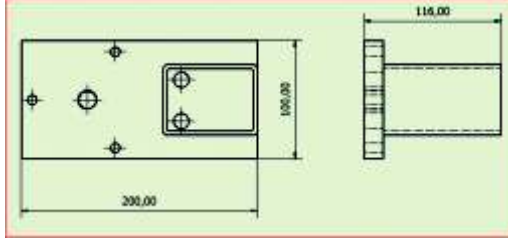
Basınçlı lavabo maçası2  
Pressurized washbowl core



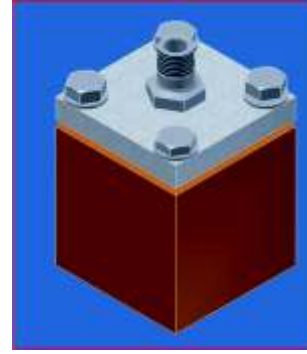


KOD 01001003

Basınçlı lavabo maçası

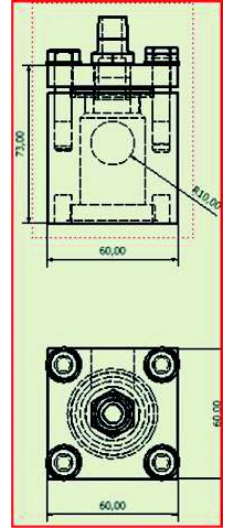


Pressurized washbowl core



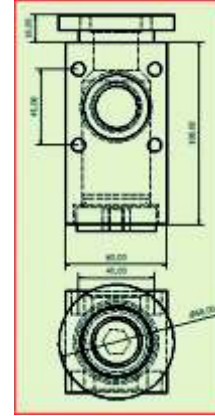
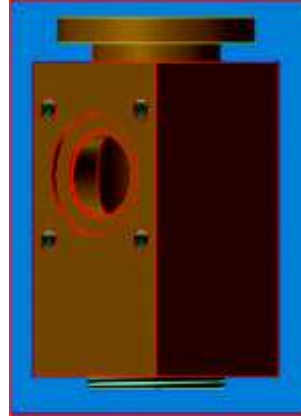
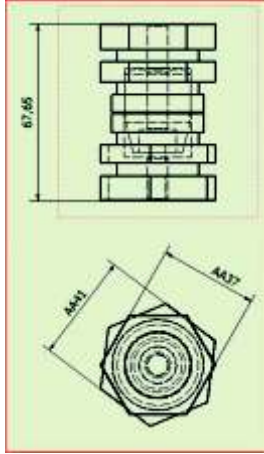
KOD 01001007

Çamur vanası  
Mud valve



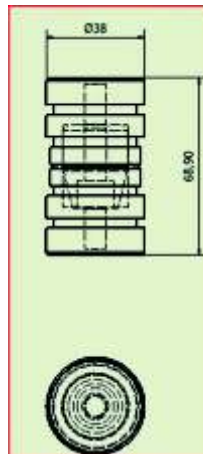
KOD 01001009

Kalıp pimi / Mold pin



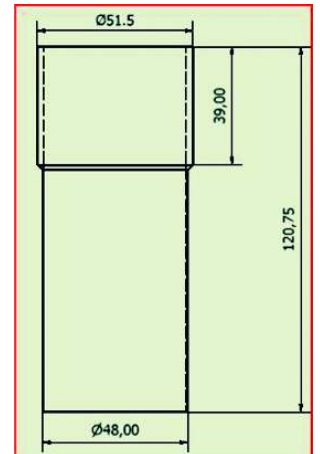
KOD 01001008

Çamur vanası çiftli  
Mud valve (double)



KOD 01001010

Kalıp pimi  
Mold pin



KOD 01001011

Kesme ablonu  
Cutting template

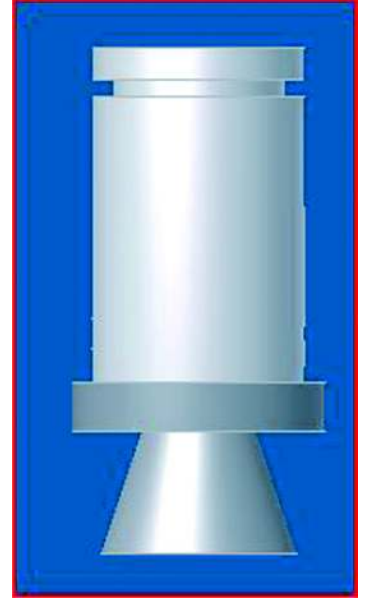
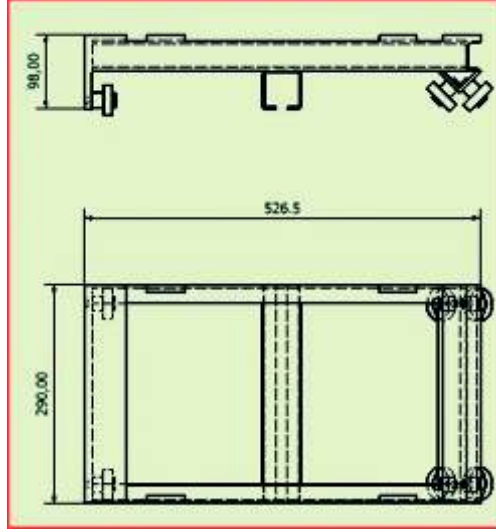


V T R F Y E



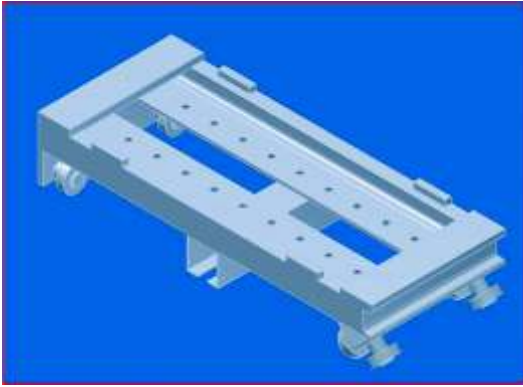
KOD 01001015

Tezgah arabası geni  
Workbench carriage (wide)



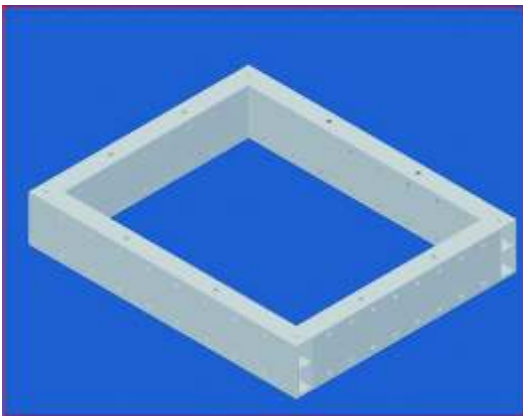
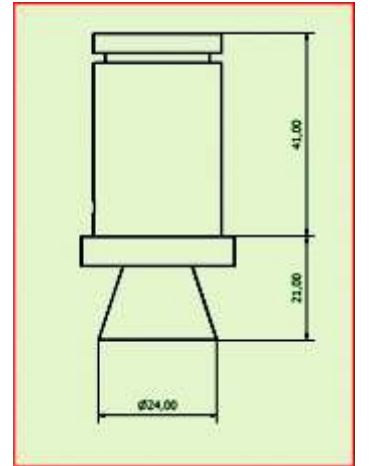
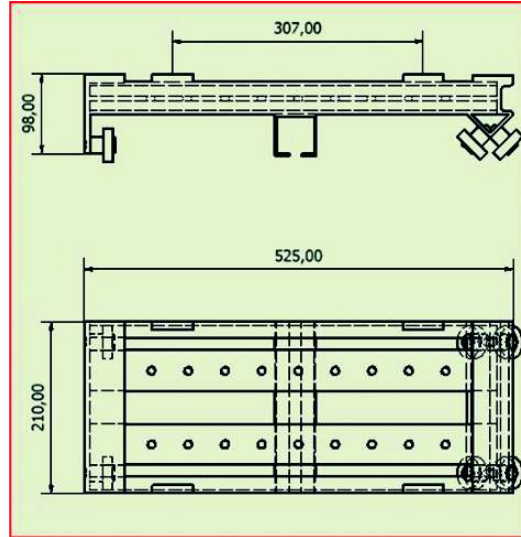
KOD 01001012

Mıknatıs  
Magnet



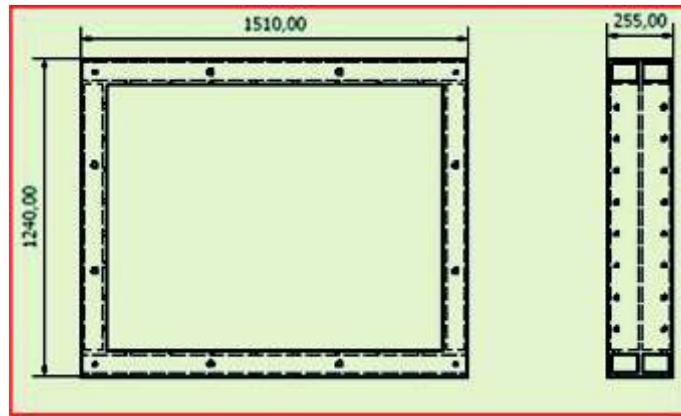
KOD 01001014

Tezgah arabası dar  
Workbench carriage (narrow)



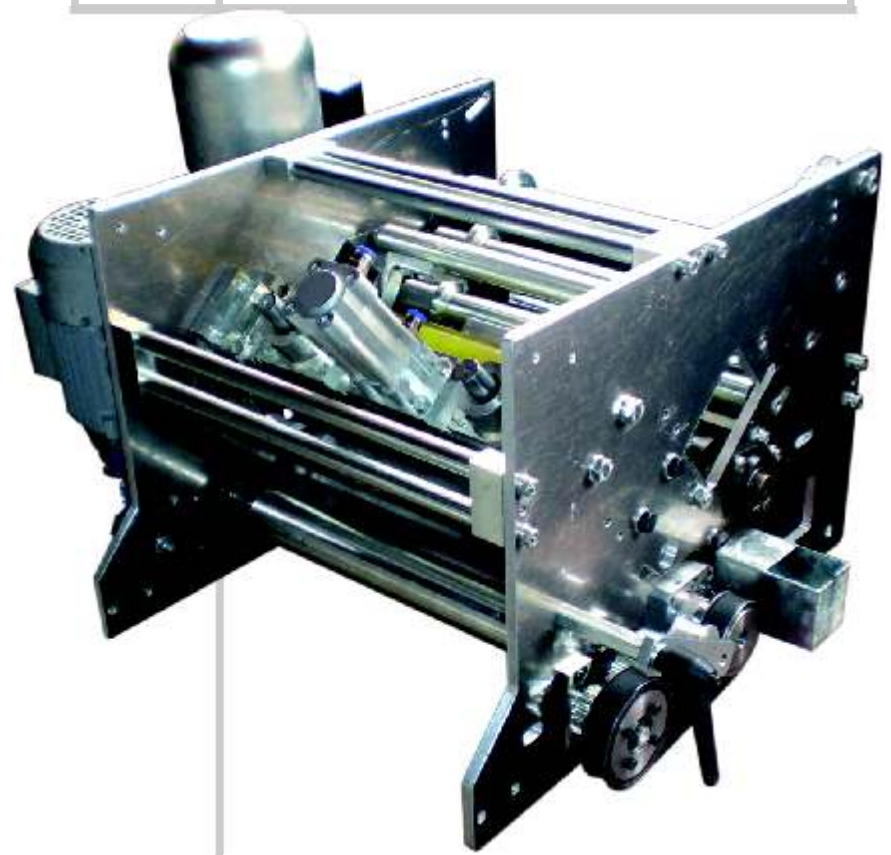
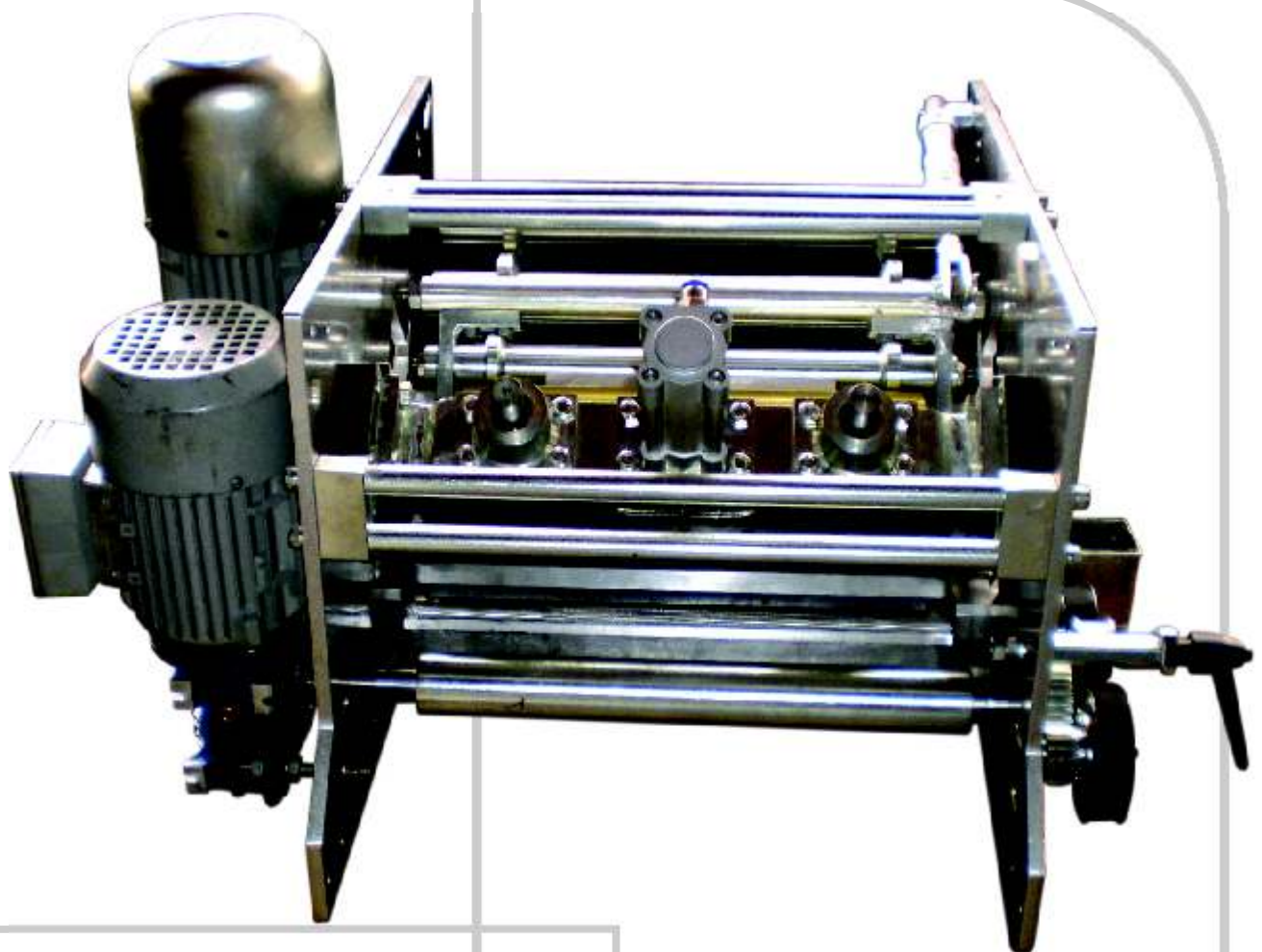
KOD 01001013

Kalıp dış çerçeve / Mold outside frame

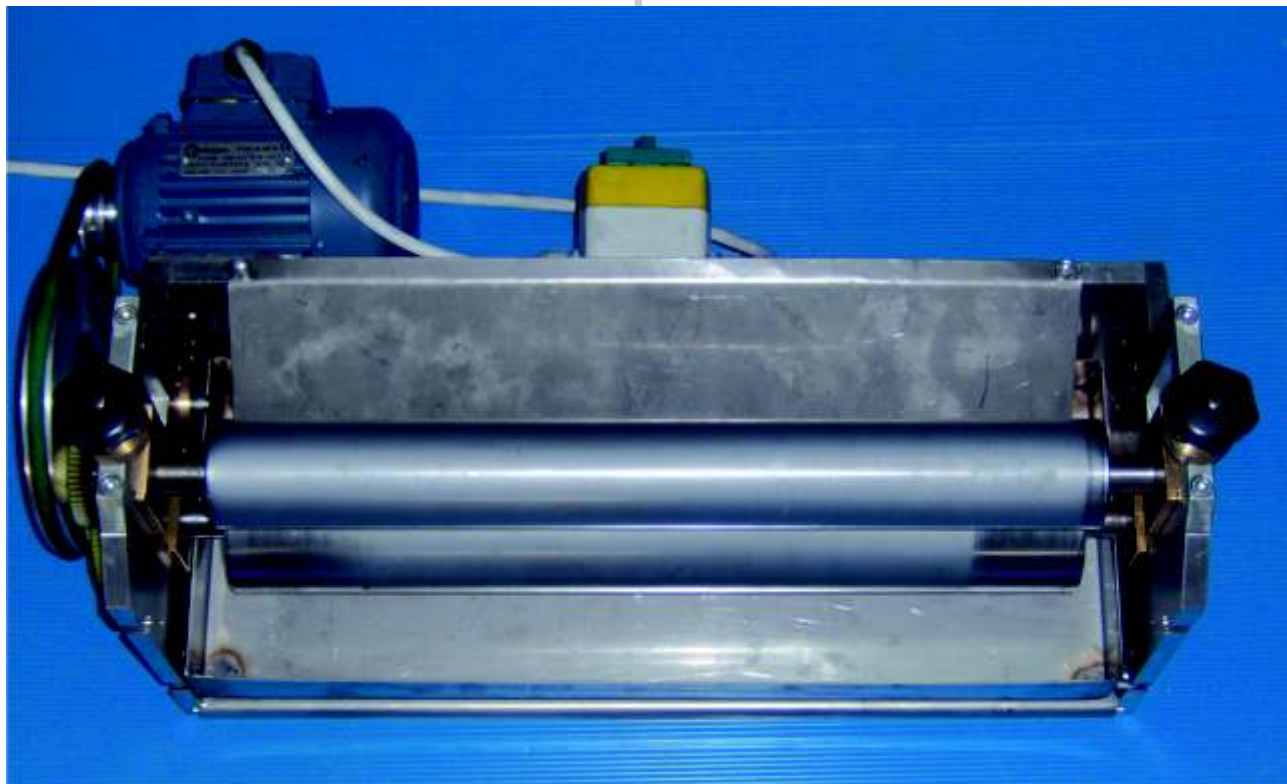




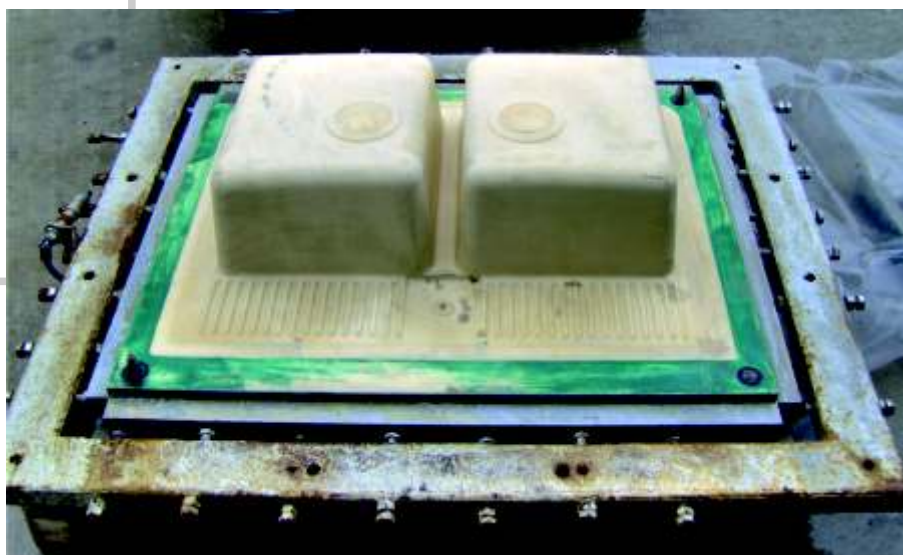
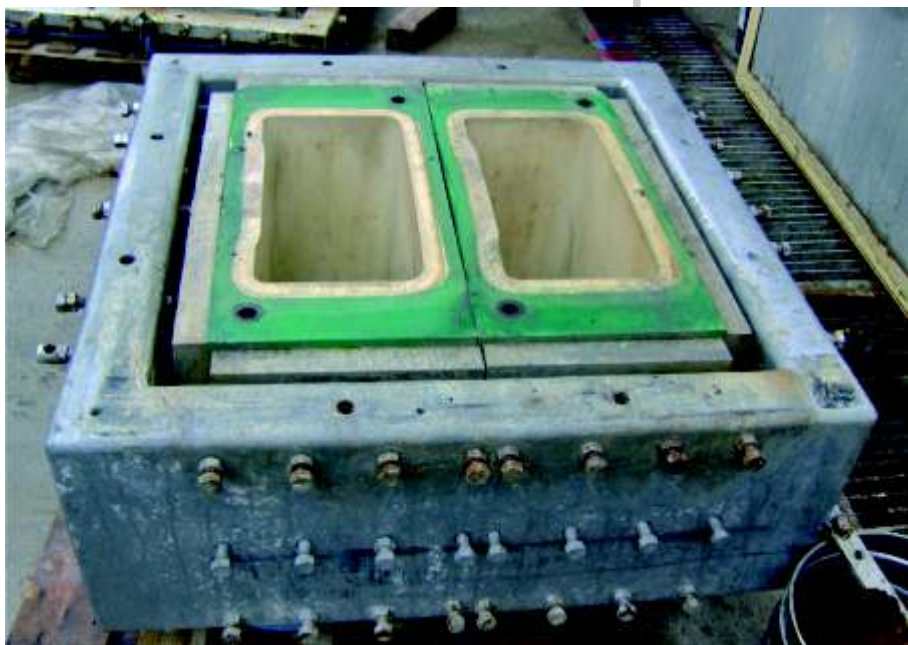




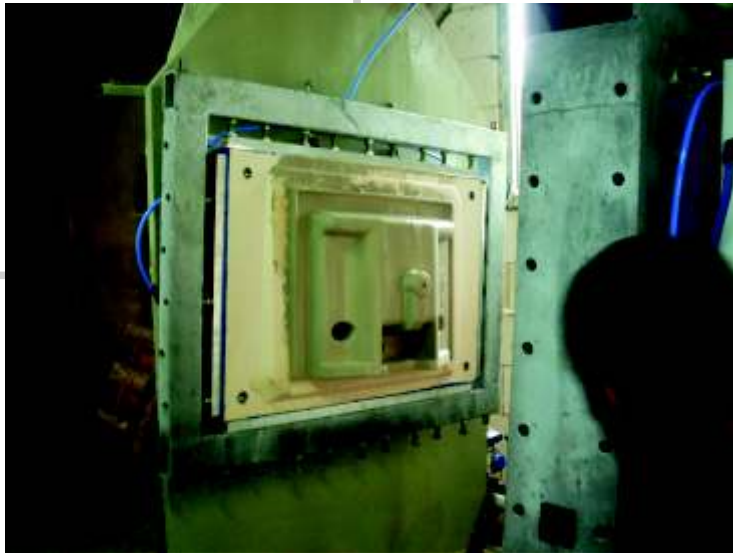




















## REFERANSLARIMIZ

### *Referances*

- ECZACI BA I YAPI GEREÇLER  
*Eczacibasi Building Øquipments*
- SACM BURSA STANBUL  
*Sacmi Bursa Istanbul*
- DURAV T YAPI GEREÇLER  
*Duravit Building Øquipment*
- SERAPOL PORSELEN  
*Serapol Porcelain*
- DEV T SERAM K  
*Idevit Ceramics*
- SAN KEY SERAM K  
*Sanikey Ceramics*
- KEY N AAT TES SAT  
*Key Building Instalation*
- KEY TEKN K YAPI MALZ.  
*Key Technique Building*
- BLANCO SERAM K  
*Blanco Ceramics*
- DESER SERAM K  
*Ideser Ceramics*
- ERCAN SERAM K  
*Matel Serel Manisa*

## MAK NA MALATLARIMIZ

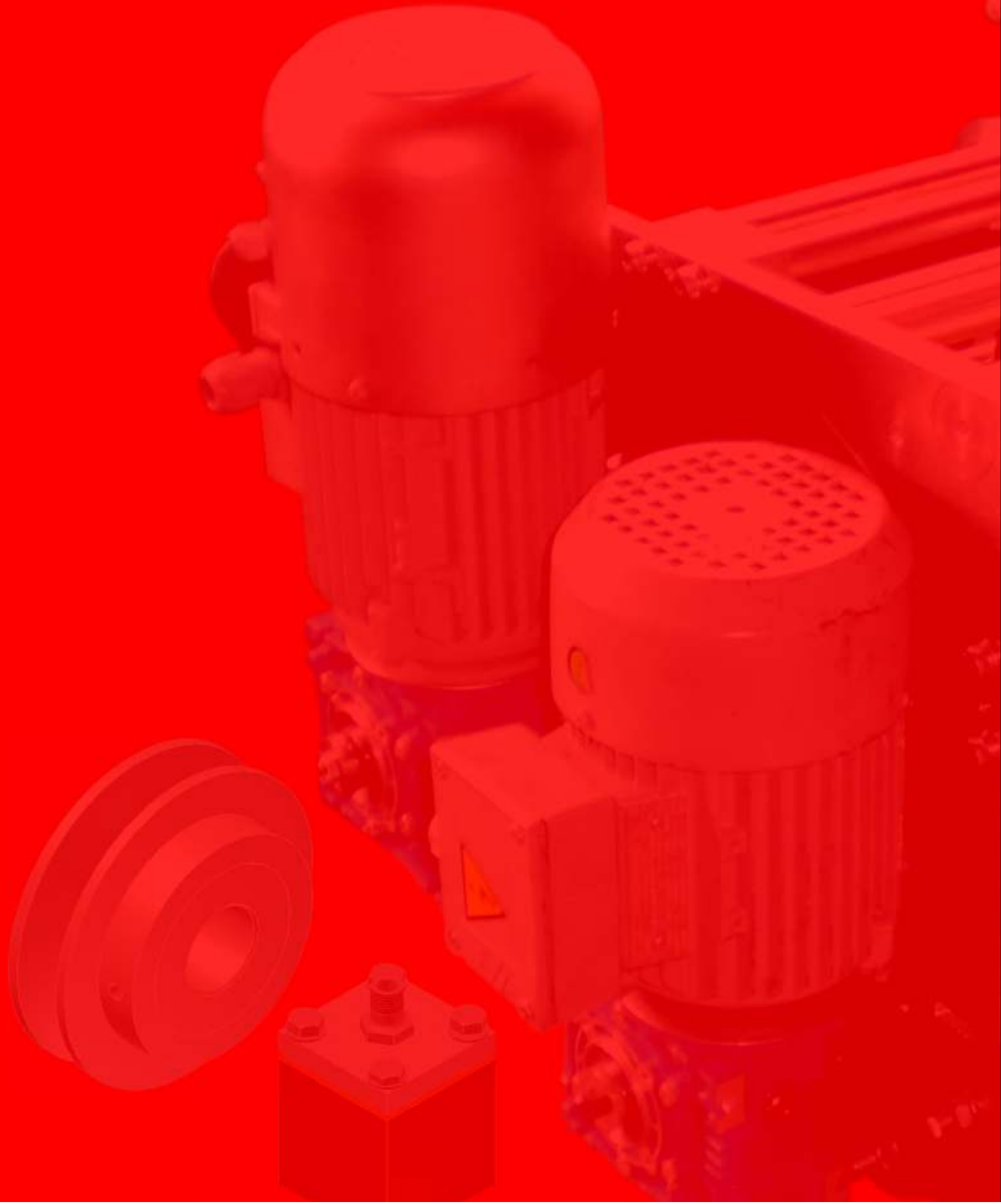
### Machine Production

#### V TR F YE

- Basınçlı döküm tezgahı / *Pressurized moulding workbench*
- Basınçlı döküm tezgahı çerçeveleri / *Pressurized moulding workbench frames*
- Bim tezgahı / *BIM workbench*
- Çenk tezgahı / *CENK workbench*
- Regaller / *Regals*
- Kurutma kabinleri / *Drying cabins*
- Sırlama kabinleri / *Glaze cabins*
- Mal alma aparatları / *Part taking apparatus*
- Dip silme / *Bottom øasure*
- Çamur açıcı / *Mud opening*
- Karı tırcılar / *Mixers*
- Disk ta lama / *Disc stoning*
- Alçı blok / *Plaster block*
- Laboratuar test cihazları / *Laboratory test apparatus*
- Kontrol ablonları / *Control templates*
- Miknatız kar ılı ı / *Magnet reactioner*
- Kesme ablonları / *Cutting templates*
- Basınçlı kalıp yedek parçaları / *Pressurized mold spare prats*
- Ürün ta ima arabaları / *Product carrying carriage*
- Sabitleme di leri / *Fixe to fix screw thread*
- Polsan karı tırcı / *Polsan mixer*
- Ölçün pleytleri / *Standard plates*
- Çamur vanaları / *Mud valve*
- Çamur miknatız arabaları / *Mud magnet carriage*
- Yedek parça imalatları / *Spare part production*

#### KARO

- Yarı otomatik file kesme ve tutkallama /
- File tutkallama manuel beslemeli / *Manuel feeded netting glue*
- Sırlama bantı / *Glaze band*
- Kurutma bantı / *Drying band*
- Yükleme robotu / *Loading robot*
- Lif bantı / *Fiber band*
- Fırın tahrik gurubu / *Oven actuating unit*
- Kutulama bantı / *To box band*
- Rulo imalatı / *Roller band*
- Yedek parça imalatı / *Spare part*



Karlıktepe Mh. Fahri Korutürk Cd. Sevilen Sk. No: 10 Kartal / STANBUL  
Tel: (0.216) 387 22 30-31 Fax: (0.216) 387 21 01  
info@argemakina.net • www.argemakina.net